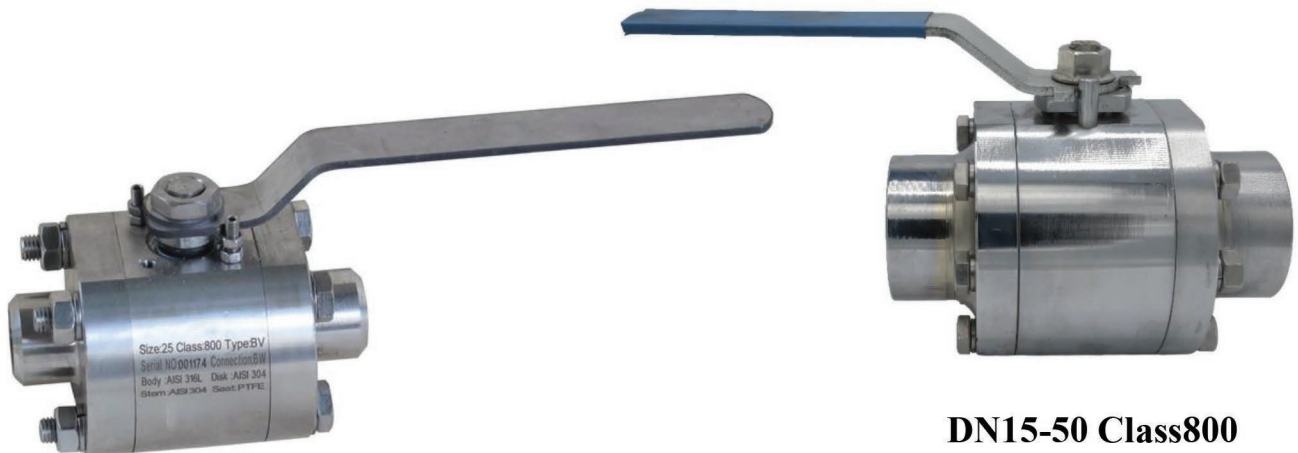


- Socket Weld 3 Piece Floating Full Bore Ball Valves**
- Butt Weld 3 Piece Floating Full Bore Ball Valves**
- Thread 3 Piece Floating Full Bore Ball Valves**
- Socket Weld 3 Piece Floating Reduced Bore Ball Valves**
- Butt Weld 3 Piece Floating Reduced Bore Ball Valves**
- Thread 3 Piece Floating Reduced Bore Ball Valves**



DN15-50 Class800

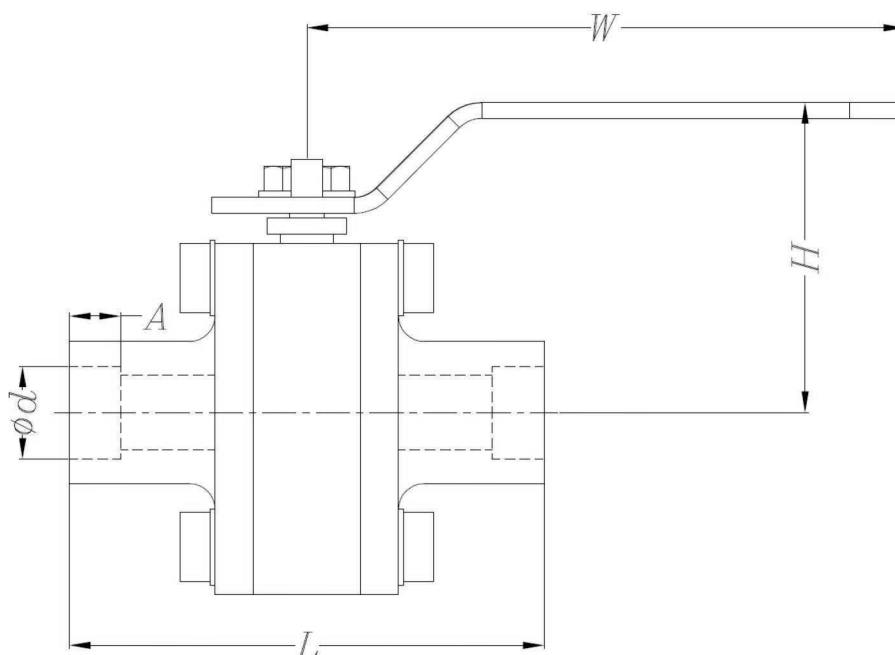
DN15-50 Class800

- End Connection according to: ASME B16.11, ASME B1.20.1, ASME B16.25
- Face to face dimension according to: Manufacture Standard
- Final inspection and test according to: ISO 5208, DIN EN 12266, API 598
- Coating: Epoxy Powder Paint with Electrostatic Process-RAL 5005
- Available Material:
 - Body: ST37-2, AISI304, AISI316, A105 (DN15-32), Duplex
 - Ball: AISI420, AISI304, AISI316, Duplex
 - Shaft: AISI420, AISI304, AISI316, Duplex
 - Sealing: PTFE, RPTFE, NBR, EPDM, Silicon, Viton
 - Seat: AISI420, AISI304, AISI316, Duplex

****Valves with special material are manufactured according to customer requirement.**

Socket Weld 3 Piece Floating Full & Reduced Bore Ball Valves DN 15-50 Class 800

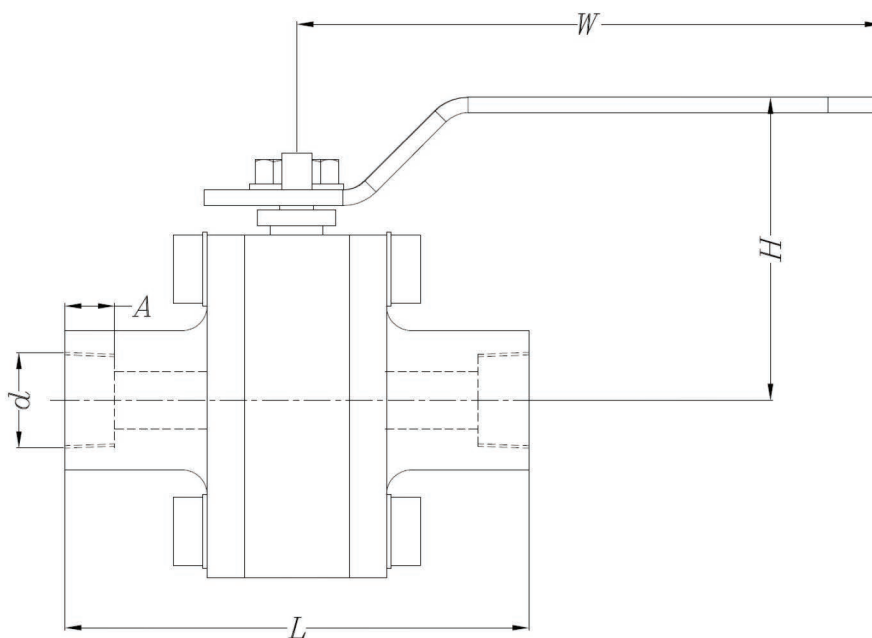
Class	PN	Hydrostatic test pressure in bar with water		
		shell	high pressure closure	low pressure closure
800	130	195	143	4 to 7



DN	L [mm]	Ød [mm]	A [mm]	H [mm]	W [mm]	Weight [kg]
15	80	22	11	65	160	1.5
20	100	28	13	70	160	2
25	110	34	13	80	200	4
32	120	43	13	90	200	6
40	140	49	13	115	250	8
50	190	61	13	130	250	12

Thread 3 Piece Floating Full & Reduced Bore Ball Valves (NPT) DN 15-50 Class 800

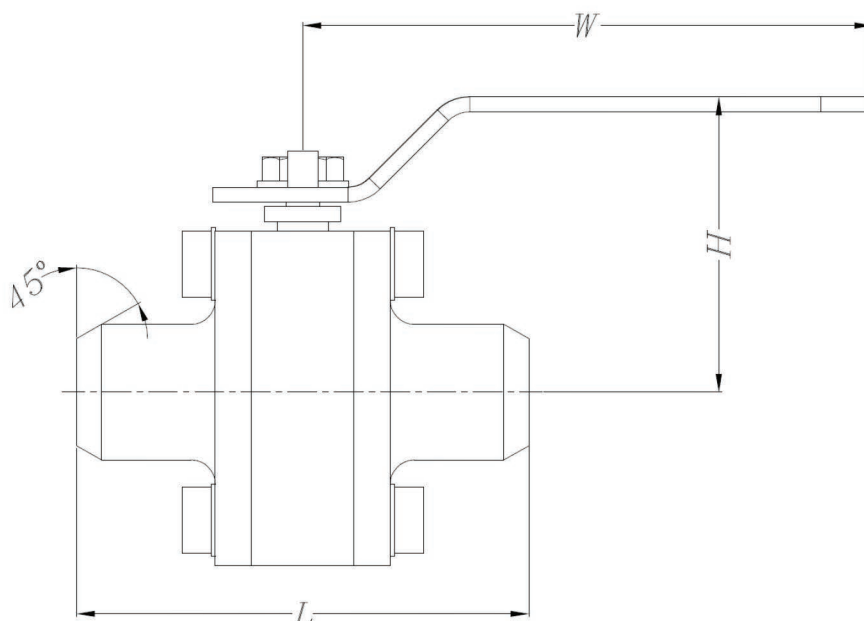
Class	PN	Hydrostatic test pressure in bar with water		
		shell	high pressure closure	low pressure closure
800	130	195	143	4 to 7



DN	L [mm]	d [in]	A [mm]	H [mm]	W [mm]	Weight [kg]
15	80	1/2"	14	65	160	1.5
20	100	3/4"	14	70	160	2
25	110	1"	18	80	200	4
32	120	1 1/4"	18	90	200	6
40	140	1 1/2"	18	115	250	8
50	190	2"	19	130	250	12

Butt Weld 3 Piece Floating Full & Reduced Bore Ball Valves DN 15-50 Class 800

Class	PN	Hydrostatic test pressure in bar with water		
		shell	high pressure closure	low pressure closure
800	130	195	143	4 to 7



DN	L [mm]	H [mm]	W [mm]	Weight [kg]
15	80	65	160	1.5
20	100	70	160	2
25	110	80	200	4
32	120	90	200	6
40	140	115	250	8
50	190	130	250	12