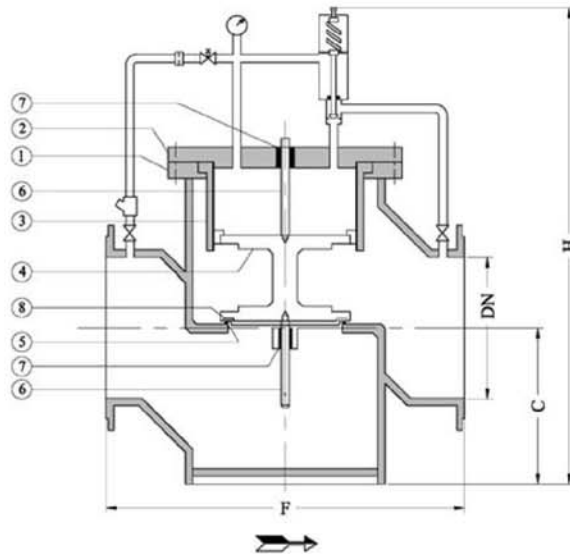


Automatic Control Valves (DN: 50...1000mm, PN: 6...40bar):

- Face to face dimension according to DIN EN 558, Series 1 (DIN 3202-F1)
- Flange drilling for fabricated steel valves according to DIN EN 1092-1 (DIN 2501) similar with ISO 7005-1 (The flange of valve can also be manufactured according to ANSI standard in both classes of 150&300 according to customer's order.)
- Flange drilling for ductile cast iron valves according to DIN EN 1092-2 (DIN 2501) similar with ISO 7005-2
- Final test according to DIN EN 12266 or ISO 5208
- Coating paint: epoxy powder paint with electrostatic process



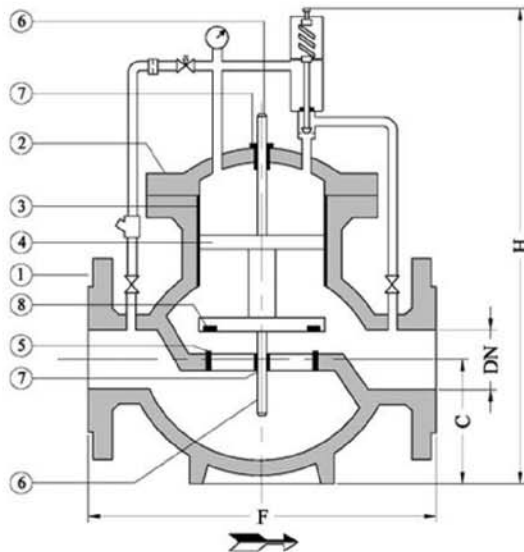
Part List, Materials and Dimensions of Fabricated Steel Pressure Sustaining Valves:



No.	Part Name	Material	No.	Part Name	Material
1	Body	ST 37-2 or ST 52-3	5	Seat Ring	Stainless Steel-Clad
2	Cover	ST 37-2 or ST 52-3	6	Shaft	X20 Cr13
3	Cylinder	AISI 304	7	Bushing	Bronze
4	Disk & Piston	ST 37-2	8	Sealing Ring	NBR or EPDM

DN [mm]	C [mm]	F [mm]	H [mm]	Weight [Kg]			
				PN10	PN16	PN25	PN40
50	100	300	650	42	44	46	47
65	100	300	650	44	47	50	52
80	130	380	750	58	62	65	70
100	150	390	750	70	73	80	85
125	170	580	850	132	135	140	145
150	200	580	950	138	147	150	153
200	250	720	1150	185	190	225	265
250	330	770	1350	315	320	330	340
300	370	845	1400	415	430	440	450
350	470	1045	1550	510	515	625	670
400	520	1080	1550	645	690	780	800
500	550	1365	1750	1015	1170	1240	1395
600	650	1560	1850	1250	1300	1350	1500
700	730	1660	2150	1895	2150	2320	2500
800	800	2000	2450	3000	3230	3290	3400
900	900	2300	2750	3220	3320	3420	3600
1000	960	2400	3000	3650	3700	3780	3900

Part List, Materials and Dimensions of Ductile Cast Iron Pressure Sustaining Valves:



No.	Part Name	Material	No.	Part Name	Material
1	Body	GGG40 or GGG50	5	Seat Ring	Stainless Steel-Clad
2	Cover	GGG40 or GGG50	6	Shaft	X20 Cr13
3	Cylinder	AISI 304	7	Bushing	Bronze
4	Disk & Piston	ST 37-2	8	Sealing Ring	NBR or EPDM

DN [mm]	C [mm]	F [mm]	H [mm]	Weight [Kg]			
				PN10	PN16	PN25	PN40
50	100	290	500	40	42	44	45
65	100	290	500	42	45	48	50
80	110	310	600	56	60	63	65
100	120	350	600	67	70	76	80
125	150	480	750	128	130	135	140
150	160	480	800	130	142	145	147
200	200	600	900	205	207	215	222
250	240	730	1000	313	316	330	338
300	280	850	1100	415	430	440	450
350	330	980	1200	510	515	530	----
400	390	1100	1300	645	690	720	----
500	440	1250	1400	1145	1170	1240	----
600	500	1450	1500	1300	1330	1370	----
700	560	1650	1700	3100	3150	3270	----
800	560	1850	1750	3500	3620	3750	----

- GGG50 according to DIN EN 1693 is similar with EN-GJS-500-7 according to DIN EN 1563
- GGG40 according to DIN EN 1693 is similar with EN-GJS-400-15 according to DIN EN 1563