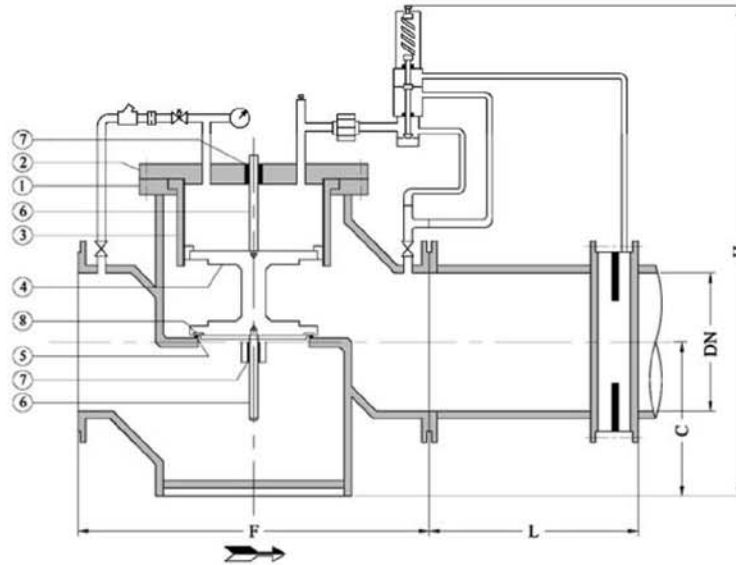


Automatic Control Valves (DN: 50...1000mm, PN: 6...40bar):

- Face to face dimension according to DIN EN 558, Series 1 (DIN 3202-F1)
- Flange drilling for fabricated steel valves according to DIN EN 1092-1 (DIN 2501) similar with ISO 7005-1 (The flange of valve can also be manufactured according to ANSI standard in both classes of 150&300 according to customer's order.)
- Flange drilling for ductile cast iron valves according to DIN EN 1092-2 (DIN 2501) similar with ISO 7005-2
- Final test according to DIN EN 12266 or ISO 5208
- Coating paint: epoxy powder paint with electrostatic process



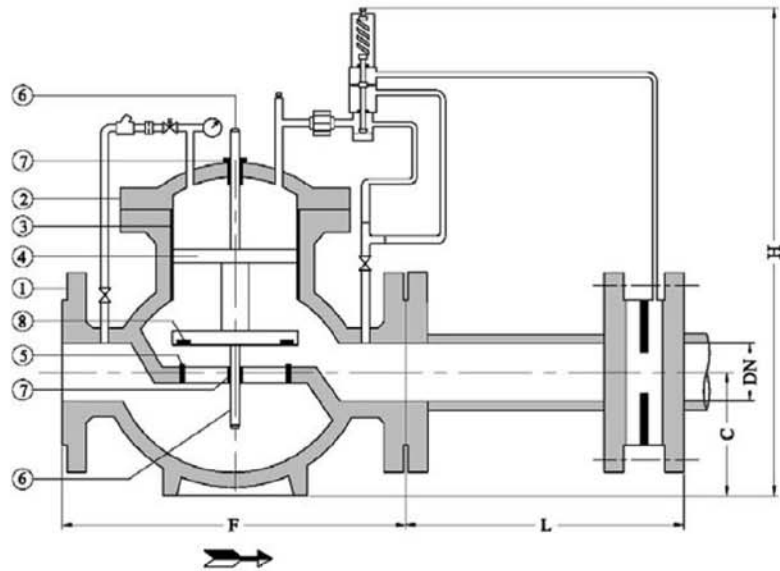
Part List, Materials and Dimensions of Fabricated Steel Flow Control Valves:



No.	Part Name	Material	No.	Part Name	Material
1	Body	ST 37-2 or ST 52-3	5	Seat Ring	Stainless Steel-Clad
2	Cover	ST 37-2 or ST 52-3	6	Shaft	X20 Cr13
3	Cylinder	AISI 304	7	Bushing	Bronze
4	Disk & Piston	ST 37-2	8	Sealing Ring	NBR or EPDM

DN [mm]	C [mm]	F [mm]	L [mm]	H [mm]	Weight [Kg]		
					PN10	PN16	PN25
50	100	300	200	650	60	62	64
65	100	300	200	650	64	65	68
80	130	380	250	750	86	87	89
100	150	390	250	750	98	102	108
125	170	580	350	850	167	170	185
150	200	580	350	950	170	172	187
200	250	720	350	1150	270	285	300
250	330	770	400	1350	397	420	454
300	370	845	400	1400	550	560	585
350	470	1045	500	1550	645	670	760
400	520	1080	500	1550	810	850	930
500	550	1365	600	1750	1255	1420	1465
600	650	1560	700	1850	1570	1630	1670
700	730	1660	800	2150	2300	2550	2730
800	800	2000	900	2450	3375	3480	3620
900	900	2300	1000	2750	3760	3920	4070
1000	960	2400	1000	3000	4220	4370	4520

Part List, Materials and Dimensions of Ductile Cast Iron Flow Control Valves:



No.	Part Name	Material	No.	Part Name	Material
1	Body	GGG40 or GGG50	5	Seat Ring	Stainless Steel-Clad
2	Cover	GGG40 or GGG50	6	Shaft	X20 Cr13
3	Cylinder	AISI 304	7	Bushing	Bronze
4	Disk & Piston	ST 37-2	8	Sealing Ring	NBR or EPDM

DN [mm]	C [mm]	F [mm]	L [mm]	H [mm]	Weight [Kg]		
					PN10	PN16	PN25
50	100	290	200	650	58	60	62
65	100	290	200	650	62	63	66
80	110	310	250	750	84	85	87
100	120	350	250	750	94	95	100
125	150	480	350	900	165	170	185
150	160	480	350	950	167	172	195
200	200	600	350	1050	258	265	280
250	240	730	400	1150	390	410	440
300	280	850	400	1350	540	550	580
350	330	980	500	1400	615	660	680
400	390	1100	500	1450	800	820	870
500	440	1250	600	1550	1385	1445	1500
600	500	1450	700	1650	1600	1640	1690
700	560	1650	800	1700	3445	3510	3620
800	560	1850	900	1750	3920	4070	4220

- GGG50 according to DIN EN 1693 is similar with EN-GJS-500-7 according to DIN EN 1563
- GGG40 according to DIN EN 1693 is similar with EN-GJS-400-15 according to DIN EN 1563